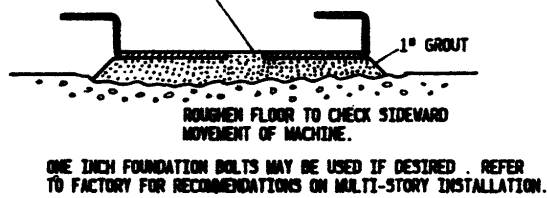


NOTES:

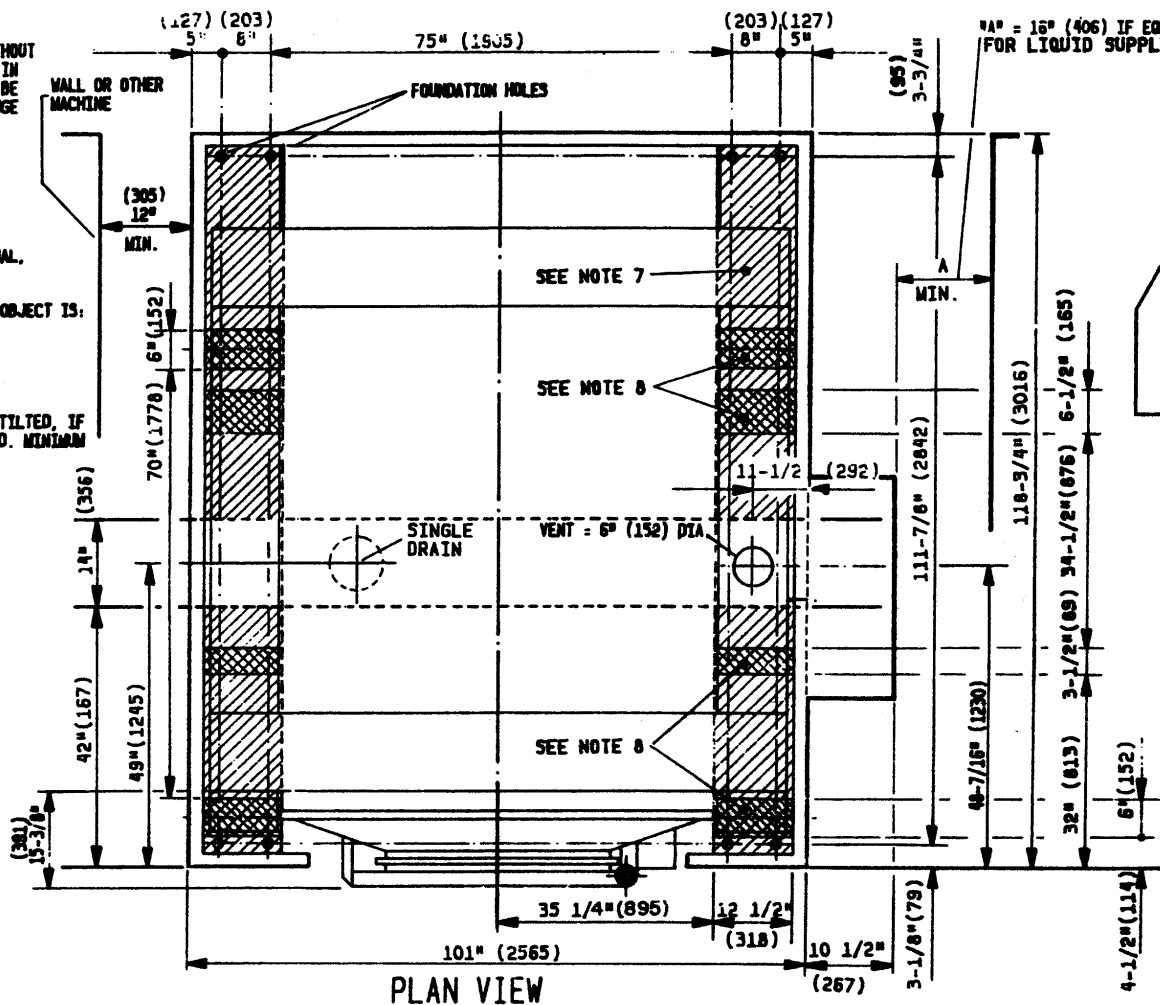
- 1) ALL DIMENSIONS SHOWN ARE APPROXIMATE. SUBJECT TO NORMAL MANUFACTURING TOLERANCES, AND TO OCCASIONAL CHANGES WITHOUT NOTICE THROUGH REDESIGN AND/OR RELOCATION OF COMPONENTS, ETC. DO NOT USE FOR CONSTRUCTION UNLESS CERTIFIED AND IN NO EVENT PIPE-CLOSER THAN FIVE FEET FROM MACHINE FACTORY MUST BE CONSULTED FOR DIMENSIONS IF MACHINE IS TO BE MOVED THROUGH NARROW OR LOW CORRIDORS OR OPENINGS. THE DIMENSIONS AND GRAPHIC DEPICTION OF THIS MACHINE MAY CHANGE WITHOUT NOTICE.
- 2) NUMBERS IN PARENTHESIS () DENOTE DIMENSIONS IN MILLIMETERS.
- 3) CUSTOMER TO SUPPLY FUSED BRANCH CIRCUIT DISCONNECT (SAFETY) SWITCHES WITH LAG TYPE FUSES, FROM POWER SOURCE TO EQUIPMENT. A SEPARATE GROUND WIRE MUST BE CONNECTED FROM DISCONNECT TO EQUIPMENT.
- 4) BOTTOM OF TILT BASE CHANNEL, FRONT FOOT GUARD, AND LEFT FOOT GUARD SERVE AS REFERENCES FOR VERTICAL, LONGITUDINAL, AND LATERAL DIMENSIONS RESPECTIVELY.
- 5) AS OF THIS WRITING, THE MINIMUM CLEARANCE REQUIRED BY U.S. NATIONAL ELECTRIC CODES, FROM ELECTRICAL BOX TO ANY OBJECT IS:
 36" (914) IF OBJECT IS AN UNGROUNDED (INSULATED) WALL.
 42" (1067) IF OBJECT IS A GROUNDED WALL (I.E. BARE CONCRETE, BRICK, ETC.)
 48" (1209) IF OBJECT IS ANY LIVE PART.
 CHECK LOCAL ELECTRIC CODES FOR FURTHER RESTRICTIONS. THE ELECTRIC BOX MUST NOT BE ACCESSED WHEN THE MACHINE IS TILTED. IF THIS CAUSES THE BOX TO BE CLOSER THAN REQUIRED BY CODES, MACHINE MUST NOT BE TILTED WHILE ELECTRICAL BOX IS OPENED. MINIMUM DIMENSION DOES NOT ALLOW CLEARANCE FOR DOOR WHILE TILTED.
- 6) GUARD RAILS MUST BE INSTALLED TO PREVENT ACCESS TO THE REAR OF THE MACHINE WHILE IT IS IN OPERATION.
- 7) SHADED AREAS ARE BASE PLATES WHICH SHOULD BE CONTINUOUSLY SUPPORTED.
- 8) DOUBLE SHADED AREAS ARE LOCATIONS OF CONCENTRATED LOADS UNDER TILT CYLINDERS AND CRADLES WHICH MUST BE SUPPORTED.
 GROUT MUST PROTRUDE INTO CENTER HOLE OF BASE CHANNEL.



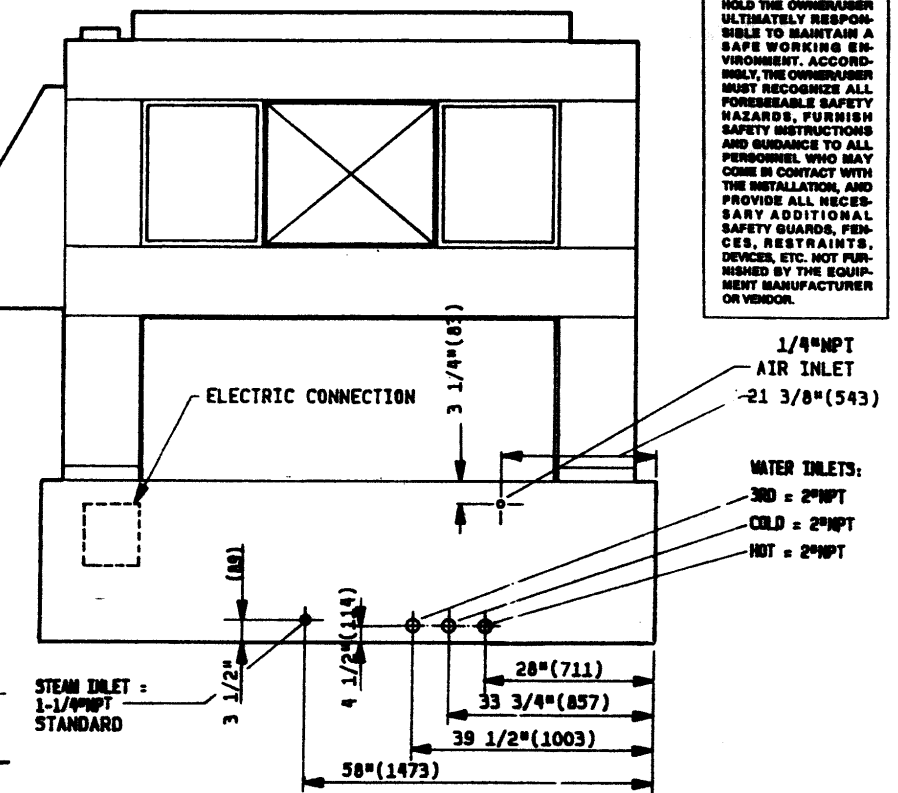
INSTALLATION DETAIL

ATTENTION
 THE FLOOR AND/OR ALL OTHER SUPPORT COMPONENTS MUST HAVE SUFFICIENT STRENGTH (AND RIGIDITY WITH DUE CONSIDERATION FOR THE NATURAL OR RESONANT FREQUENCY THEREOF) TO WITHSTAND THE FULLY LOADED WEIGHT OF THE MACHINE INCLUDING THE GOODS, THE WATER, AND THE REPEATED SINUSOIDAL (ROTATING) FORCES GENERATED DURING ITS OPERATION. WRITE FACTORY FOR ADDITIONAL WRITTEN MACHINE DATA FOR USE BY A COMPETENT SOIL AND/OR STRUCTURAL ENGINEER.

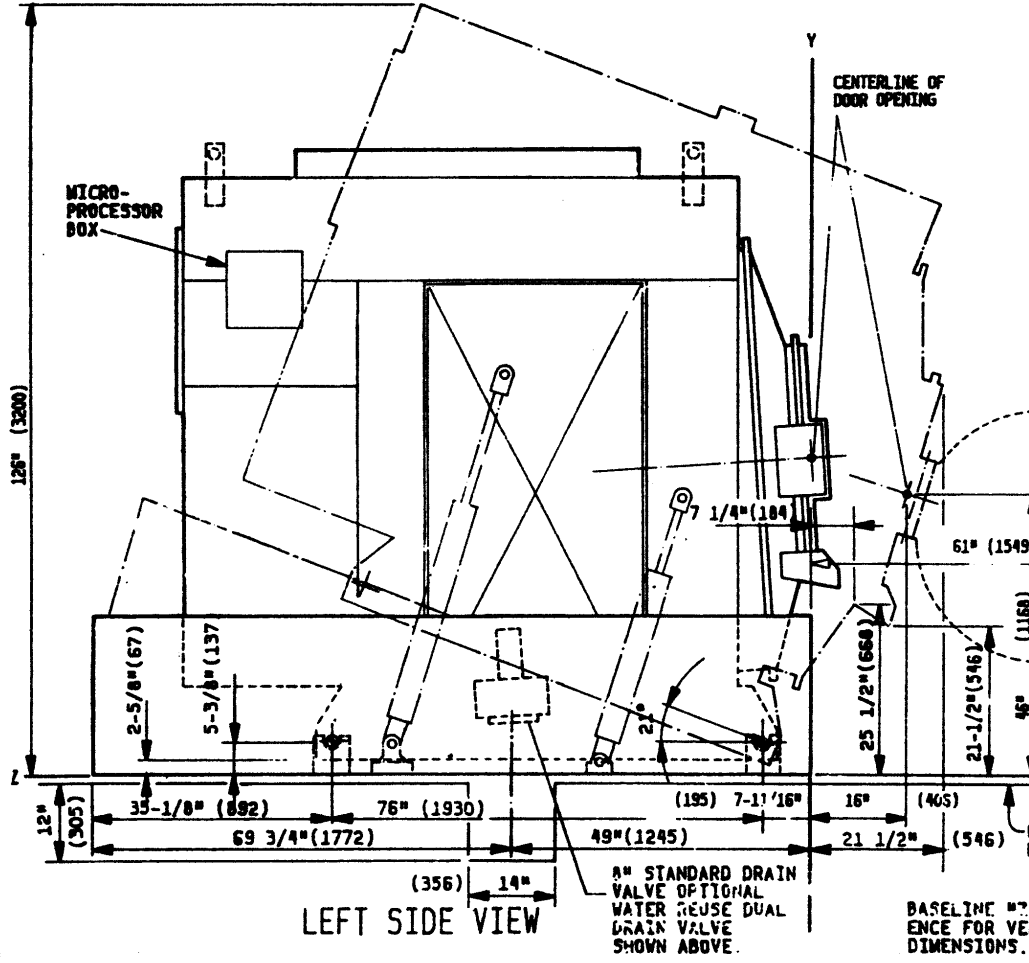
ATTENTION
 MOST REGULATORY AUTHORITIES (INCLUDING OSHA IN THE USA) HOLD THE OWNER/USER ULTIMATELY RESPONSIBLE TO MAINTAIN A SAFE WORKING ENVIRONMENT. ACCORDINGLY, THE OWNER/USER MUST RECOGNIZE ALL POSSIBLE SAFETY HAZARDS, FURNISH SAFETY INSTRUCTIONS AND GUIDANCE TO ALL PERSONNEL WHO MAY COME IN CONTACT WITH THE INSTALLATION, AND PROVIDE ALL NECESSARY ADDITIONAL SAFETY GUARDS, FENCES, RESTRAINTS, DEVICES, ETC. NOT FURNISHED BY THE EQUIPMENT MANUFACTURER OR VENDOR.



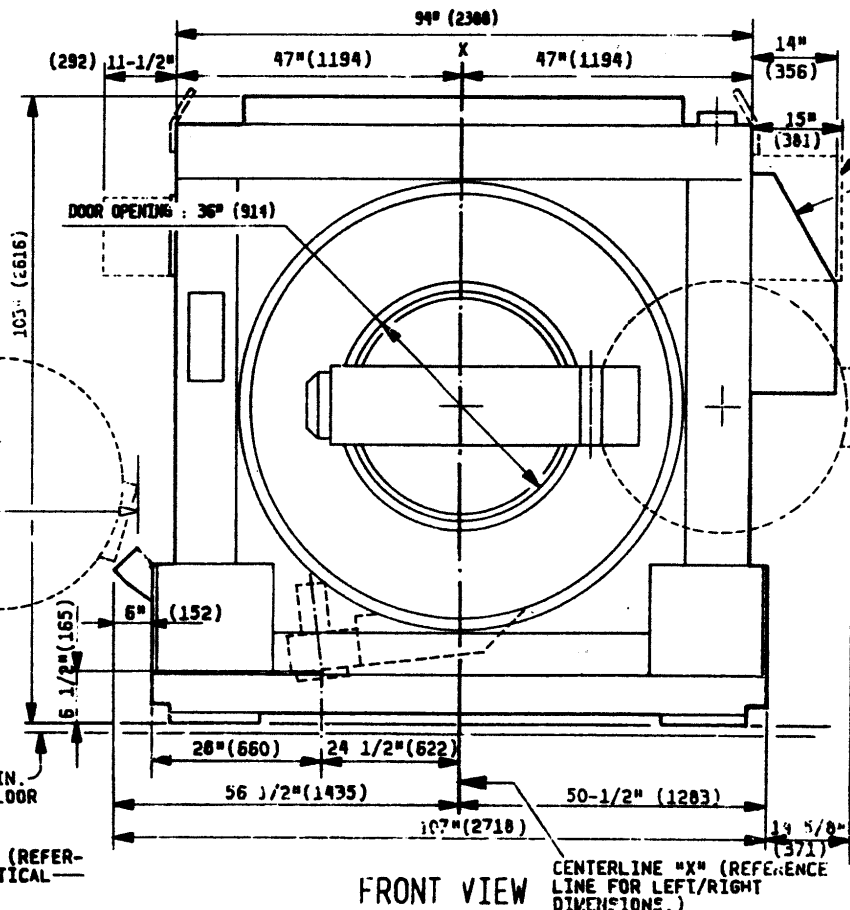
PLAN VIEW



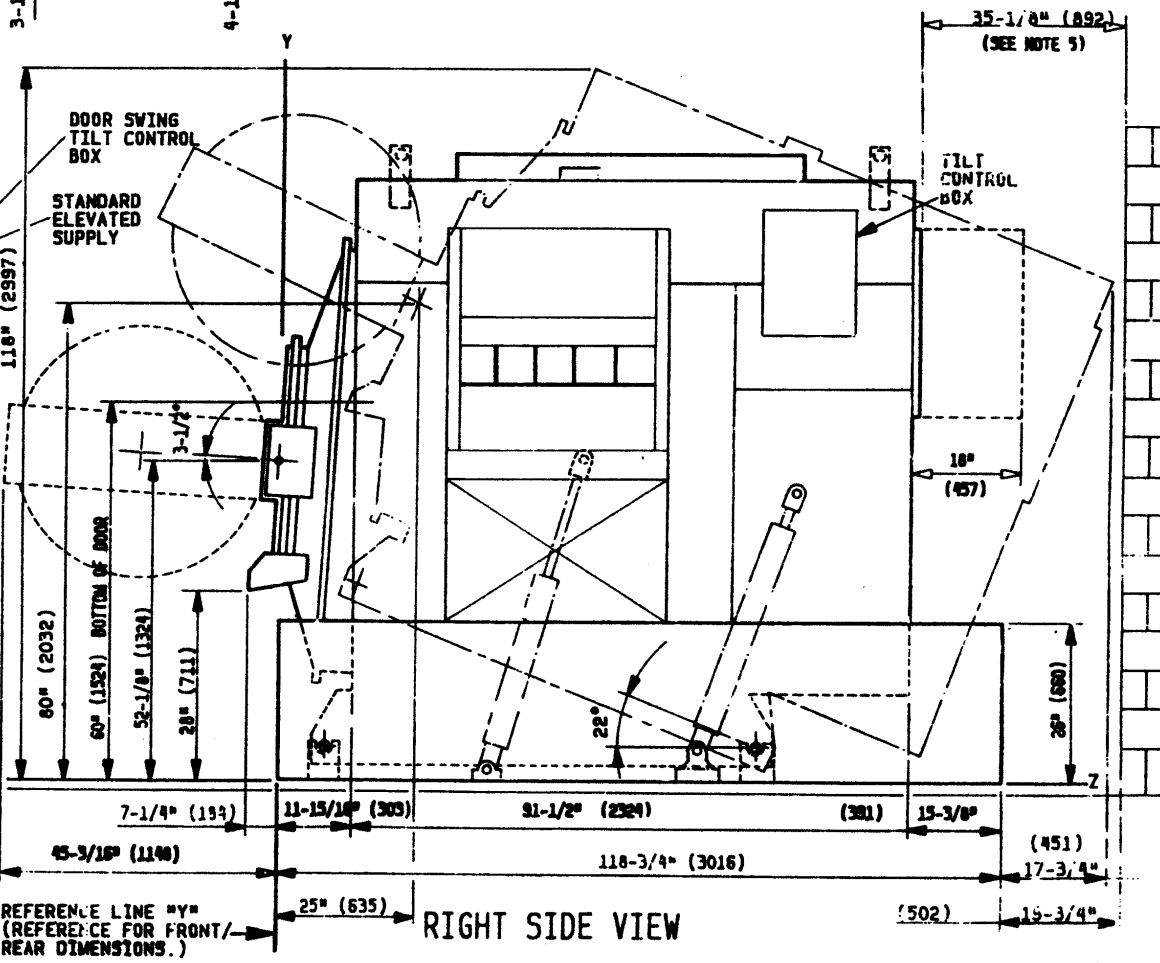
REAR VIEW



LEFT SIDE VIEW



FRONT VIEW



RIGHT SIDE VIEW