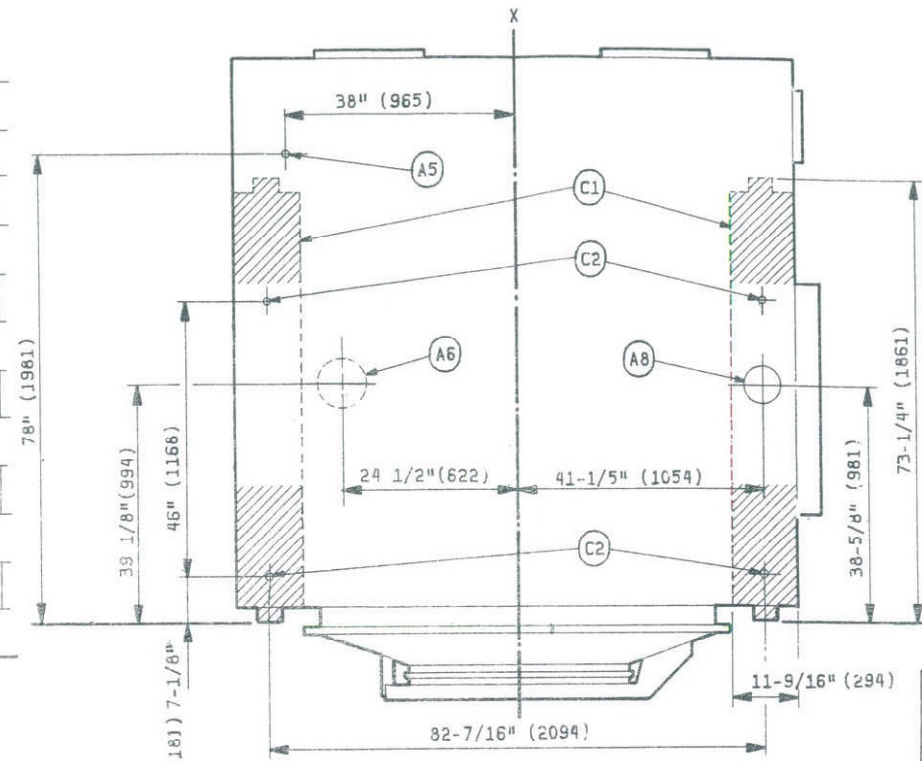


REAR VIEW



PLAN VIEW

LEGEND:

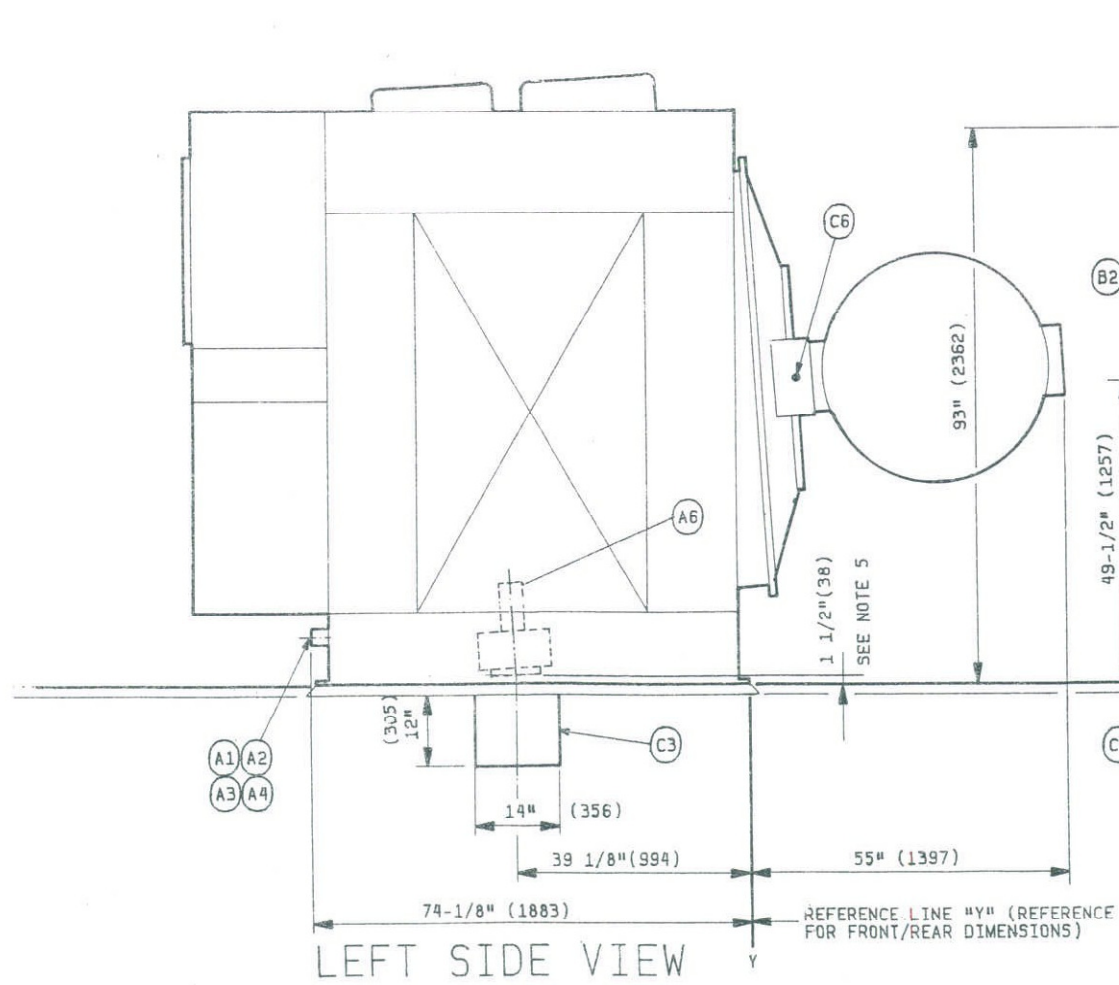
- A1: STEAM INLET = 1-1/4" NPT (STANDARD)
- A2: OPTIONAL 3RD WATER INLET = 2" NPT
- A3: SECOND WATER INLET = 2" NPT (MAY BE COLD OR EXTRA, DEPENDING ON MACHINE SPECIFICATIONS)
- A4: FIRST WATER INLET = 2" NPT (MAY BE HOT OR COLD DEPENDING ON MACHINE SPECIFICATIONS)
- A5: AIR INLET = 1/4" NPT
- A6: STANDARD DRAIN VALVE = 8" DIA. (203)
- A8: VENT = 6" DIA. (152)
- B1: ELECTRICAL POWER CONNECTION
- B2: OPERATOR CONTROLS
- C1: BASE PLATES (SHADED AREA MUST BE CONTINUOUSLY SUPPORTED) SEE NOTE 7.
- C2: ANCHOR BOLT HOLES = 1-1/16" (27) DIA.
- C3: SINGLE DRAIN TROUGH REQUIRED
- C4: GROUT = 1" (25) MIN. THICK REQUIRED.
- C5: FLUSHING SUPPLY INJECTOR
- C6: CENTER OF DOOR OPENING

ATTENTION
 MOST REGULATORY AUTHORITIES (INCLUDING OSHA IN THE USA) HOLD THE OWNER/USER ULTIMATELY RESPONSIBLE TO MAINTAIN A SAFE WORKING ENVIRONMENT. ACCORDINGLY, THE OWNER/USER MUST RECOGNIZE ALL FORESEEABLE SAFETY HAZARDS, FURNISH SAFETY INSTRUCTIONS AND GUIDANCE TO ALL PERSONNEL WHO MAY COME IN CONTACT WITH THE INSTALLATION, AND PROVIDE ALL NECESSARY ADDITIONAL SAFETY GUARDS, FENCES, RESTRAINTS, DEVICES, ETC. NOT FURNISHED BY THE EQUIPMENT MANUFACTURER OR VENDOR.

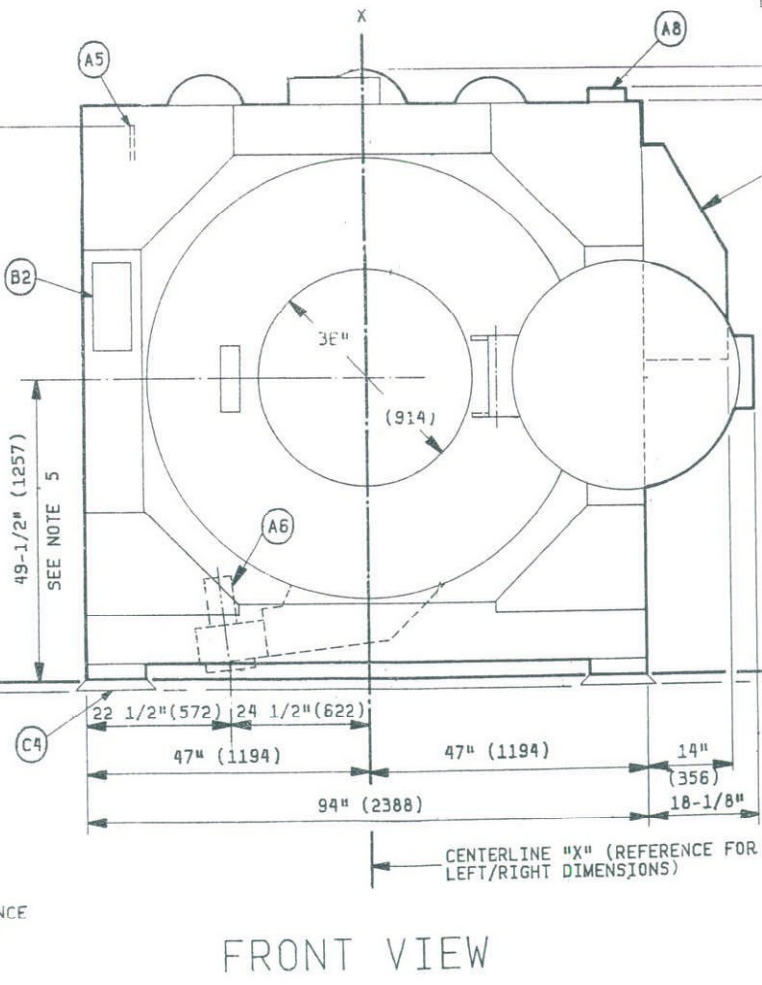
ATTENTION
 THE FLOOR AND/OR ALL OTHER SUPPORT COMPONENTS MUST HAVE SUFFICIENT STRENGTH (AND RIGIDITY WITH DUE CONSIDERATION FOR THE NATURAL OR RESONANT FREQUENCY THEREOF) TO WITHSTAND THE FULLY LOADED WEIGHT OF THE MACHINE INCLUDING THE GOODS, THE WATER, AND THE REPEATED SINUSOIDAL (ROTATING) FORCES GENERATED DURING ITS OPERATION. WRITE FACTORY FOR ADDITIONAL WRITTEN MACHINE DATA FOR USE BY A COMPETENT SOIL AND/OR STRUCTURAL ENGINEER.

NOTES:

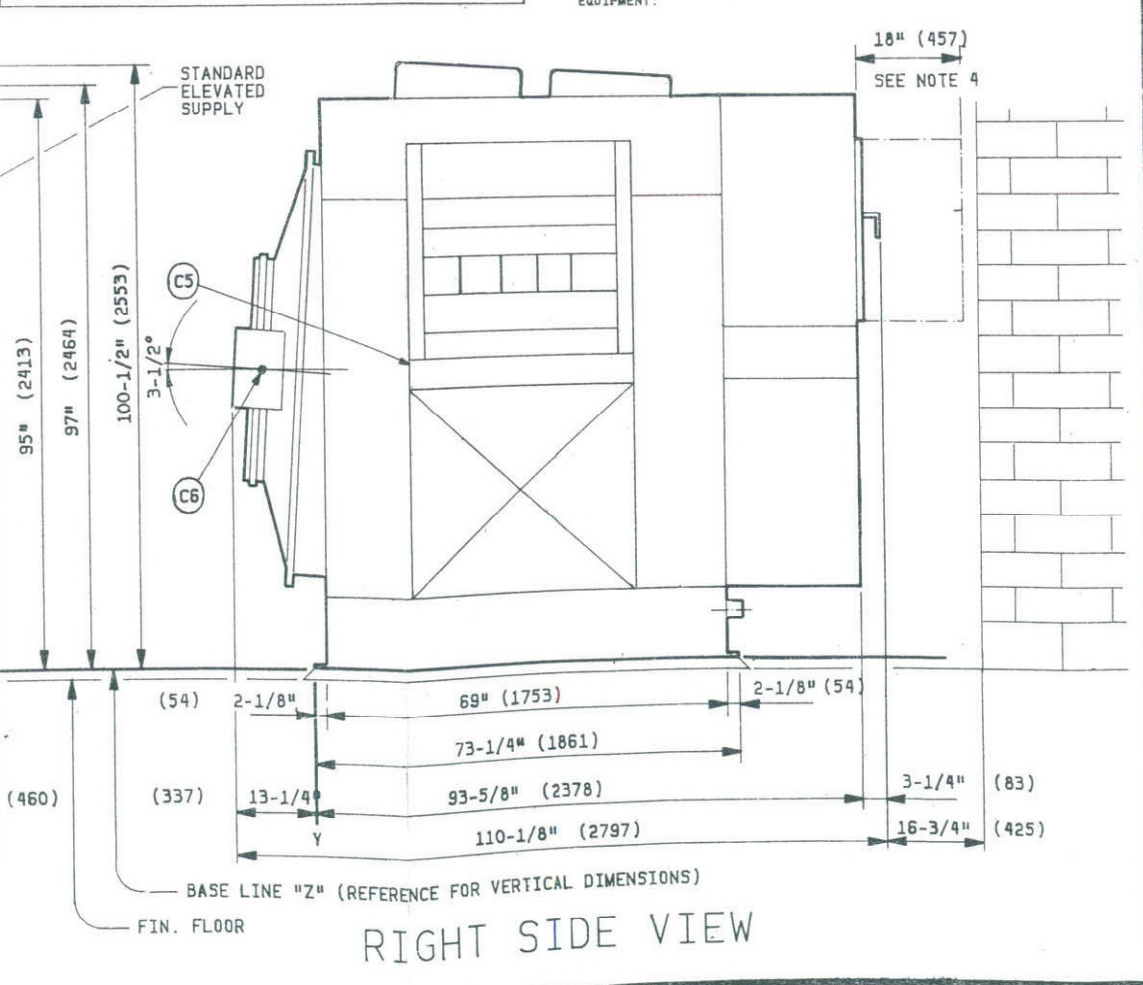
- 1) ALL DIMENSIONS SHOWN ARE APPROXIMATE, SUBJECT TO NORMAL MANUFACTURING TOLERANCES, AND TO OCCASIONAL CHANGES WITHOUT NOTICE THROUGH REDESIGN AND/OR RELOCATION OF COMPONENTS, ETC. DO NOT USE FOR CONSTRUCTION UNLESS CERTIFIED AND IN NO EVENT PRE-PIPE CLOSER THAN FIVE FEET FROM MACHINE. FACTORY MUST BE CONSULTED FOR DIMENSIONS IF MACHINE IS TO BE MOVED THROUGH NARROW OR LOW CORRIDORS OR OPENINGS. THE DIMENSIONS AND GRAPHIC DEPICTION OF THIS MACHINE MAY CHANGE WITHOUT NOTICE.
- 2) NUMBERS IN PARENTHESIS () DENOTE DIMENSIONS IN MILLIMETERS.
- 3) CUSTOMER TO SUPPLY CIRCUIT BREAKER OR FUSED BRANCH CIRCUIT DISCONNECT (SAFETY) SWITCHES WITH LAG TYPE FUSES, FROM POWER SOURCE TO WASHER.
- 4) AS OF THIS WRITING, THE MINIMUM CLEARANCE REQUIRED BY U.S. NATIONAL ELECTRIC CODES, FROM ELECTRIC BOX TO ANY OBJECT IS:
 36" (914) IF OBJECT IS AN UNGROUNDED (INSULATED) WALL.
 42" (1067) IF OBJECT IS A GROUNDED WALL (I.E. BARE CONCRETE, BRICK, ETC.)
 48" (1209) IF OBJECT IS ANY LIVE PART.
 CHECK LOCAL ELECTRIC CODES FOR FURTHER RESTRICTIONS.
- 5) THIS DIMENSION IS WITH CYLINDER IN "PUSHED DOWN" POSITION. PUSH DOWN TRAVEL IS APPROXIMATELY 2-1/2" (75).
- 6) WHENEVER PREPARING DRAWINGS ON WHICH THIS EQUIPMENT APPEARS AND WHEN PREPARING THE SITE FOR INSTALLATION OF THIS EQUIPMENT, IT IS RECOMMENDED TO FIRST LOCATE REFERENCE LINES "X", "Y", AND "Z" THEN LOCATE ALL SERVICE CONNECTIONS OFF OF THESE LINES.
- 7) PORTIONS OF BASE PLATES NOT SHADED MAY BE LEFT UNSUPPORTED TO ACCOMMODATE DRAIN TROUGH.
- 8) CUSTOMER TO SUPPLY FUSED BRANCH CIRCUIT DISCONNECT (SAFETY) SWITCHES WITH LAG TYPE FUSES, FROM POWER SOURCE TO EQUIPMENT. A SEPARATE GROUND WIRE MUST BE CONNECTED FROM DISCONNECT TO EQUIPMENT.



LEFT SIDE VIEW

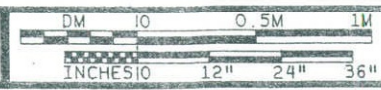


FRONT VIEW



RIGHT SIDE VIEW

MILNOR PELLERIN MILNOR CORPORATION
 P.O. Box 400, Kenner, La. 70063



DIMENSIONS & INSTALLATION 64042BHP

BD64BHP1BE/92393D